

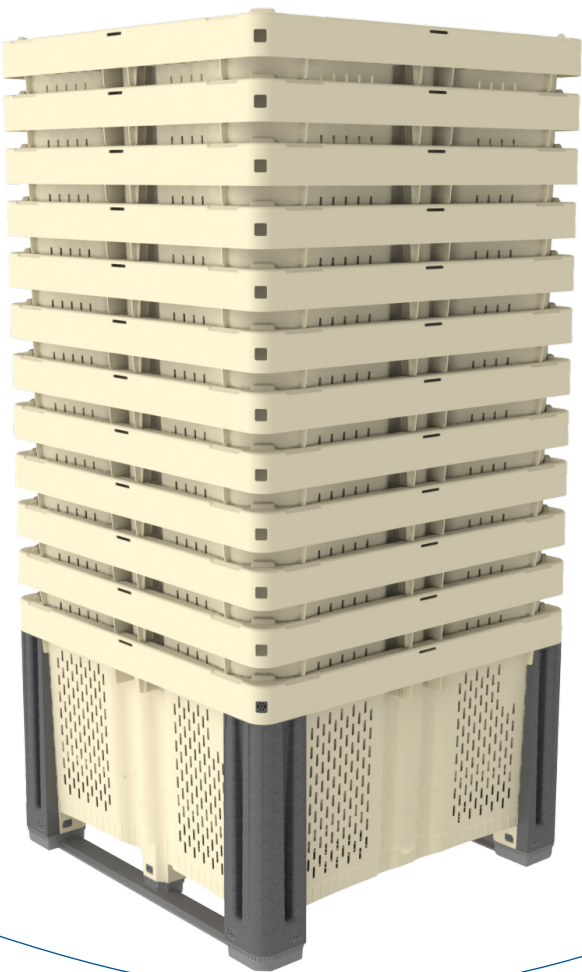
Hybrid 1212



Hybrid 1212 The Hybrid is exceptionally strong with a load capacity of 1,102 lbs (500 kg), perfect for the toughest harvest, handling, and storage applications. Ventilation can be configured for the specific application or can be completely solid. Shown here is the fully ventilated version. Our new innovative columns are designed to act as bumpers, absorbing and recoiling impact to prevent breakage, greatly increasing the bin's durability. This extremely durable bin can also be stacked high with heavy loads, secured by lugs that prevent the bottom of one bin from coming into contact with the contents of the bin below it. Column and feet inserts are easily locked into place to create an ultra-strong agricultural bin.

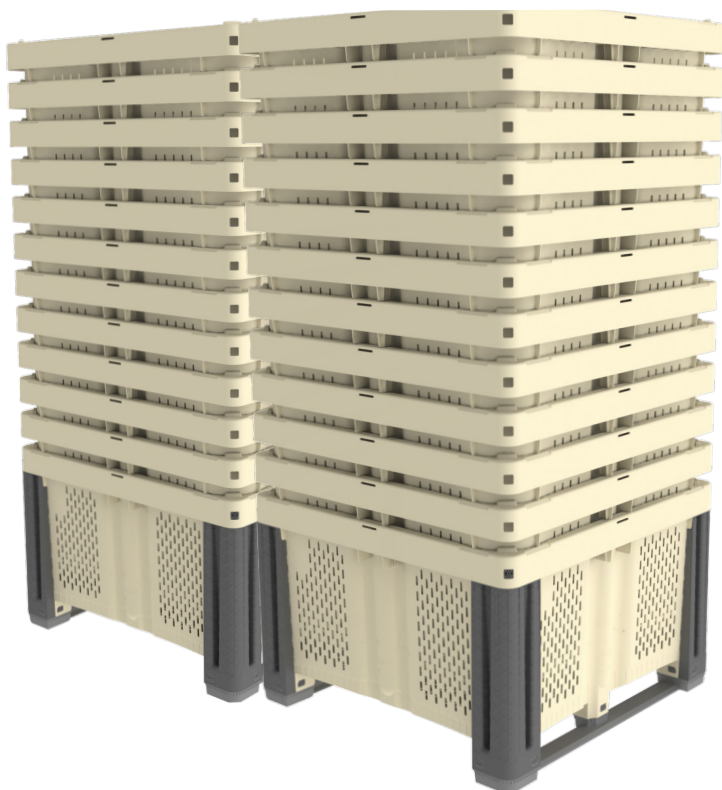
Specifications for the Hybrid 1212

Load Capacity:	1,102 lbs (500 kg)
Volume Capacity:	47,689 cubic inches (780 liters)
Tare Weight:	69.9 lbs (31.7 kg)
Maximum Stack Weight:	11,023lbs (5,000 kg)
Molding Process:	Injection Molding
Material:	Virgin Polypropylene Resin
Approval:	FDA-regulated material
Ventilation Slots:	Customizable, from fully vented to completely solid
Fork Lift Entry:	2-Way, 4-Way with 2 Straps, or 4-Way with No Straps
External Dimensions:	47.24" (L) x 47.24" (W) x 31.1" (H) 1200 mm (L) x 1200 mm (W) x 790 mm (H)
Options:	Color Options, Stickers, Solid Injection Lid,
Internal Dimensions:	Length: 45.29" / 1150.5 mm Width: 45.29" / 1150.5 mm Minimal Clearance: 39.92" / 1014 mm



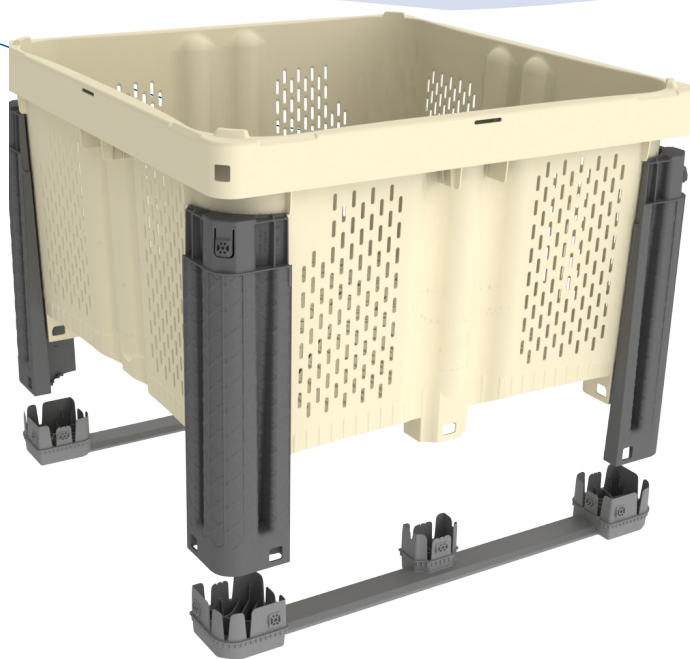
Features and Benefits

- Softer walls with all rounded edges, and less sharp angles; better than any traditional plastic bin
- Innovative perimeter geometry keeps walls from bowing out
- Smart design keeps base from deflecting, and protects content
- Wall taper prevents walls from one bin crashing against the walls of any adjacent bins. We call this the "Bruise Buffer Zone"
- Smooth soft surfaces to protect fruit
- Near 10% more ventilation than traditional plastic bins
- Durable FDA-approved plastic
- New column design absorbs and recoils any impact, instead of resisting impact and breaking
- In a stack, the top bin doesn't nest into the bottom bin. Instead, it is secured by lugs, which allows full use of internal volume and keeps the feet and strap of the top bin away from the contents below



Bins nest into each other for cost efficient delivery anywhere in the world

*Once column and feet inserts are locked into place, configuration is permanent to create the strongest, most durable agricultural bin possible



Column and feet inserts can be locked into place at destination



Ultra strong bins, can be stacked high with loads



MACROPLASTICS™

A Division of IPL Plastics Inc.
800.845.6555 | info@macroplastics.com
www.macroplastics.com