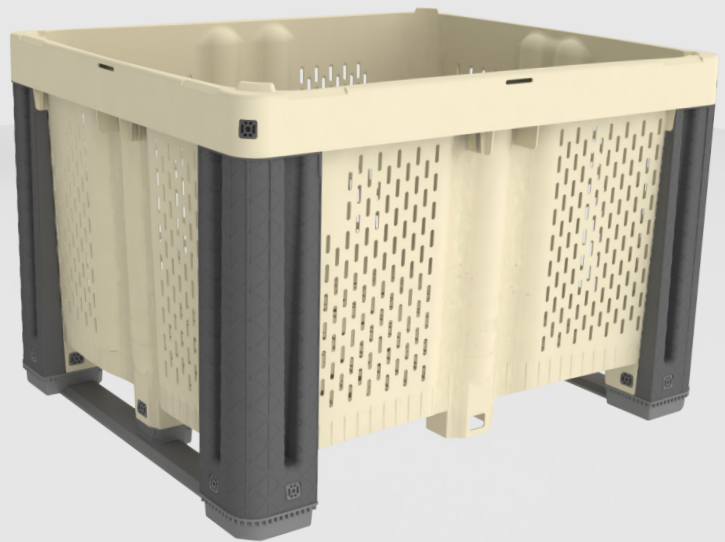


Hybrid 1012 FV

HYBRID FAMILY



The Hybrid 1012 is exceptionally strong with a load capacity of 1,102 lbs (500 kg), perfect for the toughest harvest, handling, storage, or shipping applications. Our new innovative columns are designed to act as bumpers, absorbing and recoiling impact to prevent breakage, greatly increasing the bin's durability. This ultra-strong bin can also be stacked high with heavy loads. Column and feet inserts allow the bins to nest when empty and can then be locked into place permanently, or removed for returnable shipping and storage.

Features

Softer walls with all rounded edges, and less sharp angles; better than any traditional plastic bin

Innovative perimeter geometry keeps walls from bowing out

Smart design keeps base from deflecting and protects content

Wall taper prevents walls from one bin crashing against the walls of any adjacent bins. We call this the "Bruise Buffer Zone"

Smooth soft surfaces to protect fruit

Near 10% more ventilation than traditional plastic bins

Durable FDA-approved plastic

New column design absorbs and recoils any impact, instead of resisting impact and breaking

In a stack, the top bin doesn't nest into the bottom bin. Instead, it is secured by lugs, which allows full use of internal volume and keeps the feet and strap of the top bin away from the contents below

Hybrid 1012 FV

800-845-6555
www.iplmacro.com

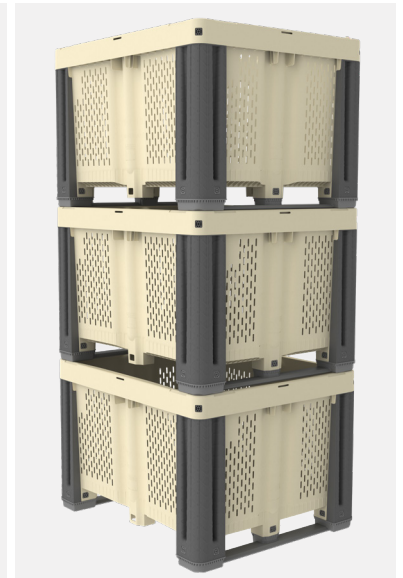
Benefits of Using Hybrid 1012 FV



Column and feet inserts can be locked into place permanently, or removed for returnable shipping and storage.



Rectangular shape allows 3 bins to fit in space of 2.



Ultra strong bins, can be stacked high with loads.

Hybrid 1012 FV Specification

Load Capacity	1,102 lbs (500 kg)
Volume Capacity	39,045 cubic inches (640 liters)
Tare Weight	65 lbs (29.5 kg)
Maximum Stack Weight ¹	11,023 lbs (5,000 kg)
Molding Process	Injection molding
Material	Virgin polypropylene resin
Approval	FDA-regulated material
Ventilation Slots	Customizable, from fully vented to completely solid
Fork Lift Entry	2-Way, 4-Way with 2 straps, or 4-Way with no straps
External Dimensions	39.37" (L) x 47.24" (W) x 31.1" (H) 1,000 mm (L) x 1,200 mm (W) x 790 mm (H)
Options	Color options, stickers, solid injection lid, configurable label area
Internal Dimensions	Length: 44.54" / 1131.4 mm Width: 37.43" / 950.8 mm Minimal Clearance: 32.06" / 814.4 mm



Bins nest in each other when column and feet inserts are removed.

Notes

Dimensions assume tolerance of ¼". Volume capacities assume tolerance of 5% and tare weights assume a tolerance of 4% unless noted otherwise. Ambient temperature approximately equal to 75° F. Data is subject to change.

1 Stack Weight = (weight of bin contents + tare weight of bin) X number of bins in stack

Please refer to the appropriate User Guide for information on the safe transportation, stacking and handling of Macro products. The User Guides in PDF format are available, call us at 800.845.6555.