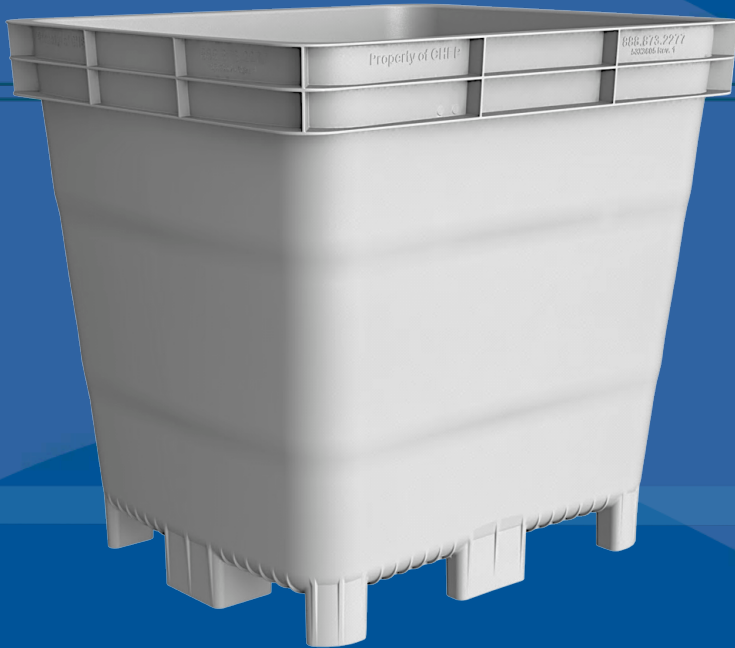


Macro ProBin™ 46NS Lightweight, Nestable Food Processing Bin



The Macro ProBin 46NS is ideal for handling meat or seafood, dry cereal or grain, fermenting wine, pickling or brining, and other food processing applications. The smooth, nonporous surfaces are easy to clean and won't trap debris. These large capacity rectangular bins have 4-way entry are easy to move, nest and store.



Load Capacity:	2,100 pounds (952kg)
Volume Capacity:	271 gallons (1026 liters)
Tare Weight:	77 pounds (35kg) (+/- 5%)
Molding Process:	High-pressure injection molding
Material:	Polypropylene, U.V. rating 36630 KJM (10 year AZ)
Approval:	FDA-regulated material
Nesting Height/Angle:	5,15" (156.21 mm) / 3.5 degrees
Wall Thickness:	3/4" (6.3mm)
External Dimensions: Top of Bin	49" (L) x 41.75" (W) x 46 (H) (1244mm x 1060mm x 1168mm)
External Dimensions: Bottom of Bin	39.8" (L) x 32.1" (W) x 46 (H) (1013mm x 815mm x 1168mm)

Feature Highlights

- **Smooth surfaces with rounded corners** inside the bin cause fewer product scuffs and abrasions, protecting the quality of your product
- **Nonporous surfaces** in the injection-molded plastic bin won't absorb water or dehydrate your product and are easy to clean and sanitize.
- **FDA Approved, high-impact, splinter-resistant polypropylene** is strong and durable, reducing maintenance costs and extending the life of the bin.
- **Easy-to-sanitize** Macro ProBin 46NS keeps cleaning costs to a minimum. A high-pressure wash removes most debris; a nonabrasive brush can dislodge any remaining items.
- **Recyclable, FDA-approved materials** are certified safe for use with food products and maintain a high residual value at the end of the bin's life cycle.
- **Lightweight materials, easy to nest and de-nest design** allows for the low delivery costs.
- **Easy to remove label area**

